

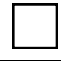


## May 2010 BOM –Grandmother’s Puzzle - 10 ½” Block

You will construct this block using 3 colours – the blue focus fabric supplied by the Guild, a coordinating blue from your stash and white. Adapted from the Quilter’s Cache pattern.

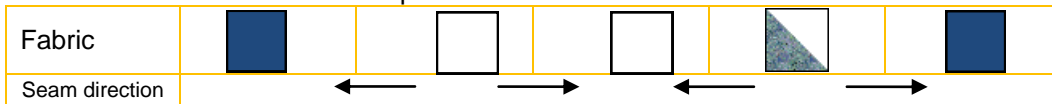
Fabrics:		Cutting Instructions	Colours
Blue Focus fabric		Four 2 ½” squares Four 2 7/8” squares	Use the 6” x 12” piece supplied at the April 2010 meeting
Medium Blue		Five 2 ½ “ squares	Tone on tone – not suitable for vibrant prints
White		Eight 2 ½ “ squares Four 2 7/8” squares	

### Instructions:

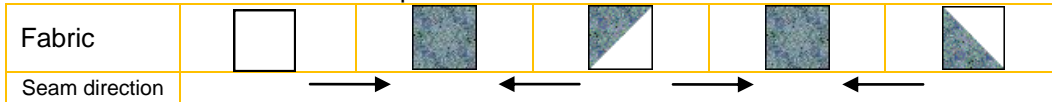
1. Draw a diagonal line on the wrong side of the white 2 7/8” squares. Place a white square on each the focus fabric 2 7/8” squares, right sides together. Align the raw edges. Sew a 1/4” seam on each side of the diagonal line. Cut apart on the line and press seam allowances toward the focus fabric. Trim points and trim to measure 2 1/2” square if needed. Repeat for a total of eight pieced units.

That’s it – now you’re ready to assemble the rows.

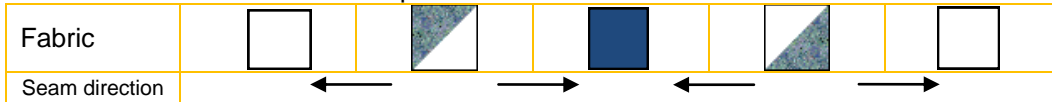
2. Assemble Row 1 as follows and press the seams as indicated:



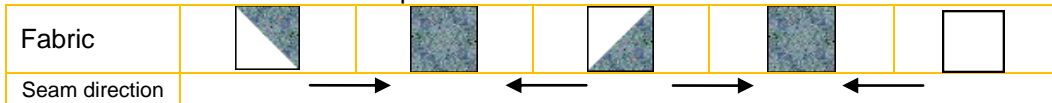
3. Assemble Row 2 as follows and press the seams as indicated:



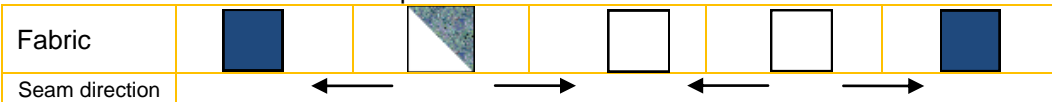
4. Assemble Row 3 as follows and press the seams as indicated:



5. Assemble Row 4 as follows and press the seams as indicated:



6. Assemble Row 5 as follows and press the seams as indicated:



7. Join the five rows to form the completed block. Unfinished size is 10 ½” x 10 ½”.



*The lucky winner will assemble the blocks into units of four, rotating the top right and bottom left blocks by 90 degrees to get a circular effect. We have lots of leftover fabric to use for borders.*

